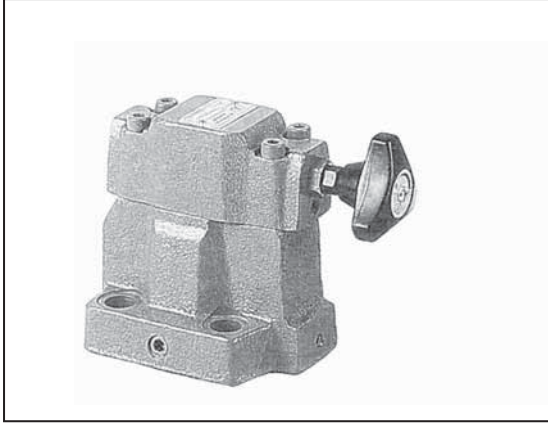


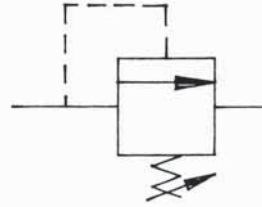
DÜŞÜK SESLİ PLEYT TİPİ BASINÇ EMNİYET VALFİ

LOW NOISE TYPE PILOT OPERATED RELIEF VALVES

SBG - 06



SEMBOL / SYMBOL



İŞLEVİ / FUNCTION

PILOT KONTROLLÜ EMNİYET VALFLERİ ÖZELLİKLE AZ GÜRÜLTÜ MEYDANA GETİREN TİPLERDİR. BUNLAR, POMPALARI VE KONTROL VALFLERİNİ EKSTRA BASINÇTAN KORUR. SİSTEM BASINCINI SABİT TUTABİLİR. TAHLİYE HATTI SAYESİNDE UZAKTAN KONTROL VE BOŞALTIMCI İŞLEVİ DE VARDIR.

THE PILOT OPERATED RELIEF VALVES HAVE BEEN SPECIALLY CREATED INTO LOW NOISE TYPE. IT CAN PROTECT PUMPS AND CONTROL VALVES TO AVOID EXTRA PRESSURE, ALSO CAN KEEP SYSTEM PRESSURE STABLE AND WITH DRAIN PORT TO CARRY OUT "REMOTE CONTROL" AND UNLOADING FUNCTION.

DÜŞÜNCELER / REMARKS

* UZAKTAN KONTROL EMNİYET VALFLERİ TAHLİYE DEVRELERİNDE KULLANILIR. EĞER TAHLİYE HATTININ HACMİ ÇOK BÜYÜKSE SORUN OLABİLİR. TAHLİYE HATTININ İÇ ÇAPINI VE UZUNLUĞUNU AZALTMAYA ÇALIŞINIZ.
THE REMOTE CONTROL RELIEF VALVES ARE USED IN DRAIN CIRCUIT. IF INTERNAL VOLUME OF DRAIN PORT IS TOO LARGE, THEN "CHATTERING" MIGHT BE HAPPENED. SO TRY TO MINIMIZE INTERNAL DIAMETER AND LENGTH OF PIPE.

* BASINÇ AYARLANIRKEN KİLİT SOMUNUNU GEVŞETİNİZ. SONRA ÜÇ KÖŞE TOPUZU YAVAŞÇA SAAT YÖNÜNDE ÇEVİRİRSENİZ, BASINÇ AZALIR. TOPUZUN BİR TUR DÖNMESİ 50 BAR'LIK BASINÇ DEĞİŞİMİNE KARŞILIK GELİR.
WHEN ADJUST PRESSURE, RELEASE LOCK NUT THEN SLOWLY TURN THE TRIANGLE HAND KNOB. USE CLOCKWISE TURN TO INCREASE THE PRESSURE AND USE COUNTER CLOCKWISE TURN TO DECREASE THE PRESSURE. THE PRESSURE CHANGE OF ONE CIRCLE TURN OF HAND KNOB, IS 50 BARS. AFTER ADJUSTMENT, PLEASE DONT FORGET TO CREW UP THE LOCK NUT.

* DÖNÜŞ HATTI DİREKT OLARAK TANKA VERİLMELİDİR. BAŞKA VALFLERİN DÖNÜŞ HATLARIYLA BİRLEŞTİRİLMEMELİDİR.
THE PIPE OF RETURN OIL TO TANK, CANNOT CONNECT WITH PIPE OF OTHER VALVES' RETURN LINE, SHOULD RETURN TO OIL TANK DIRECTLY.

* KÜÇÜK DEBİLER İÇİN BASINÇ AYARI KARARSIZ OLABİLİR. BU YÜZDEN MODEL 06 SERİLERİ İÇİN DEBİ 5L/MİN (1.3 GPM) ÜZERİNDE OLMALIDIR.
WHEN USED IN SMALL FLOW, PRESSURE ADJUSTING MIGHT BE UNSTABLE. SO WHEN USE MODEL 06 SERIES, FLOW CONDITIONS SHOULD MORE THAN 5/L (1.3 GPM).

SİPARİŞ KODU / ORDERING CODE

SBG -- 06 -- A -- 50

DİZAYN NUMARASI / DESIGN NUMBER

BASINÇ AYAR ARALIKLARI / PRESSURE ADJUSTING RANGE

A: 7-70 KGF/CM² (100 -1000 PSI)

B: 35-140 KGF/CM² (500-2000 PSI)

C: 70-250 KGF/CM² (1000-3600 PSI)

DELİK ÖLÇÜSÜ / PORT SIZE

06:3/4"

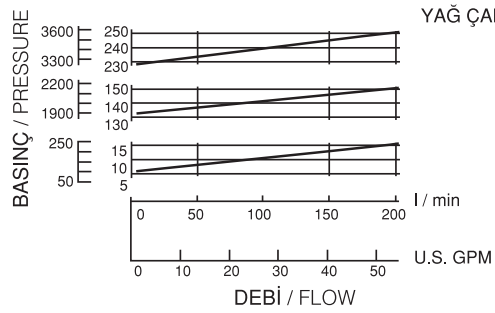
G: ALT PLEYT MONTAJI İÇİN

SBG - 06 SERİLERİ / SBG - 06 SERIES

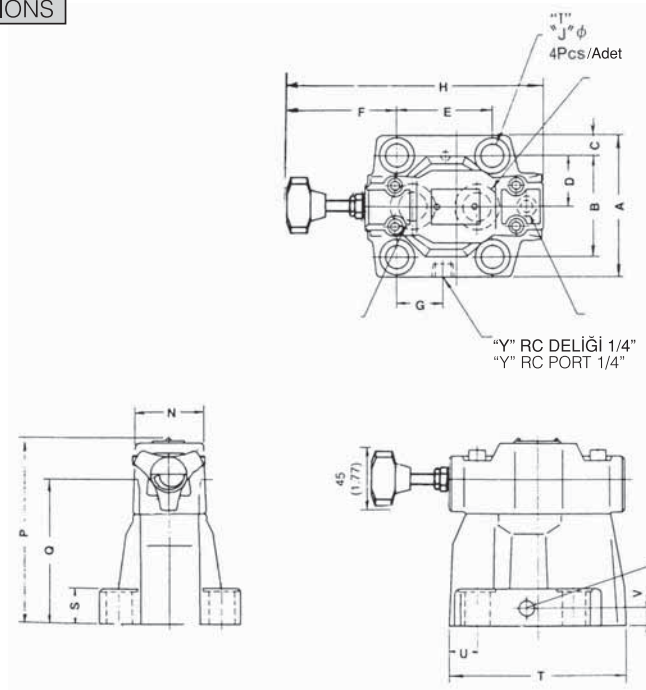
TEKNİK BİLGİ / TECHNICAL DATA

MODEL NO	MAKSİMUM BASINÇ MAX. PRESSURE KGF / CM ² (PSI)	BASINÇ AYAR ARALIKLARI PRESSURE ADJ. RANGE KGF / CM ² (PSI)	MAKS. DEBİ ORANI MAX. FLOW RATE LPM (GPM)	MONTAJ CİVATALARI MOUNTING BOLTS METER (INCH)
SBG -06 SERİLERİ SBG -06 SERIES	250 (3600)	A: 7 - 70 (100 -1000) B: 35 - 140 (500 - 200) C: 70 -250 (1000 - 3600)	200 (52.8)	M16X50L (5/8" -- 2) 4 PCS

ÇALIŞMA EĞRİLERİ / PERFORMANCE CURVES



ÖLÇÜLER / DIMENSIONS



BİRİM / UNIT : MM (INCH)
AĞIRLIK / WEIGHT : 8.4 KGS

MODEL	A	B	C	D	E	F	G	H	J	K	N	P	Q	S	T	U	V	BİRİM UNIT
SBG06	103 4.06	70 2.76	16.3 0.64	35 1.38	66.7 2.63	92 3.63	30.5 1.20	163.5 6.44	17.5 0.69	130 5.12	105 4.13	134 5.28	103 4.06	26 1.02	122 4.80	20 0.79	13 0.51	MM INCH